



User Manual

Glite T8

Pacific Image Electronics



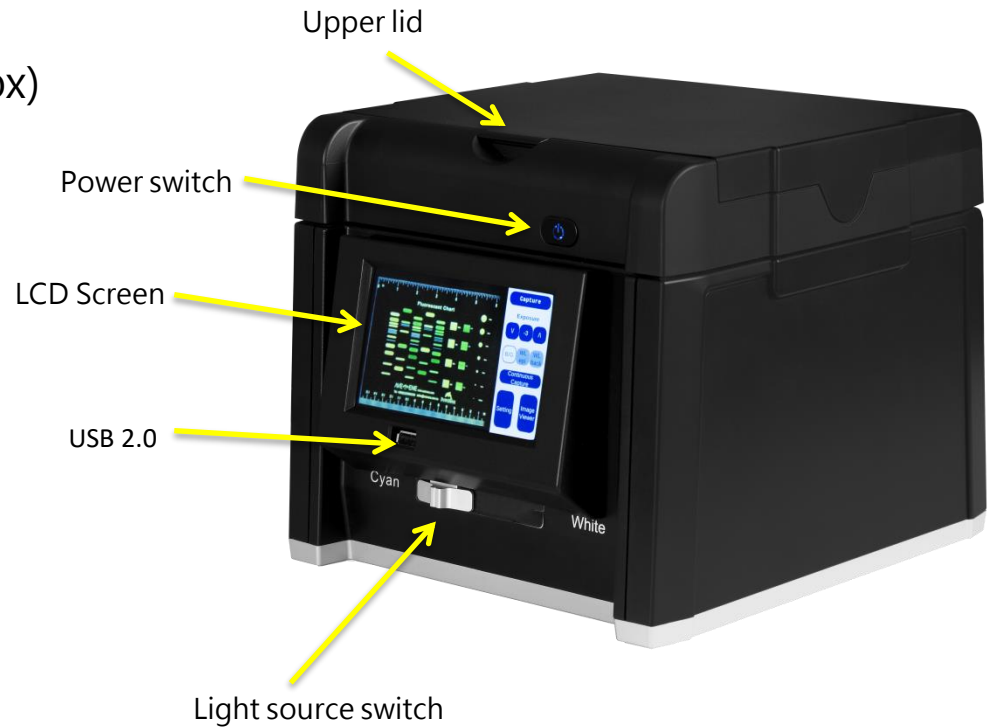
Product Content

- » Glite T8
- » User manual
- » A/C Power Transformers(12V, 4.1A, DC)
- » Amber Filter (in box)
- » Black shading plate (in box)

Glite T8

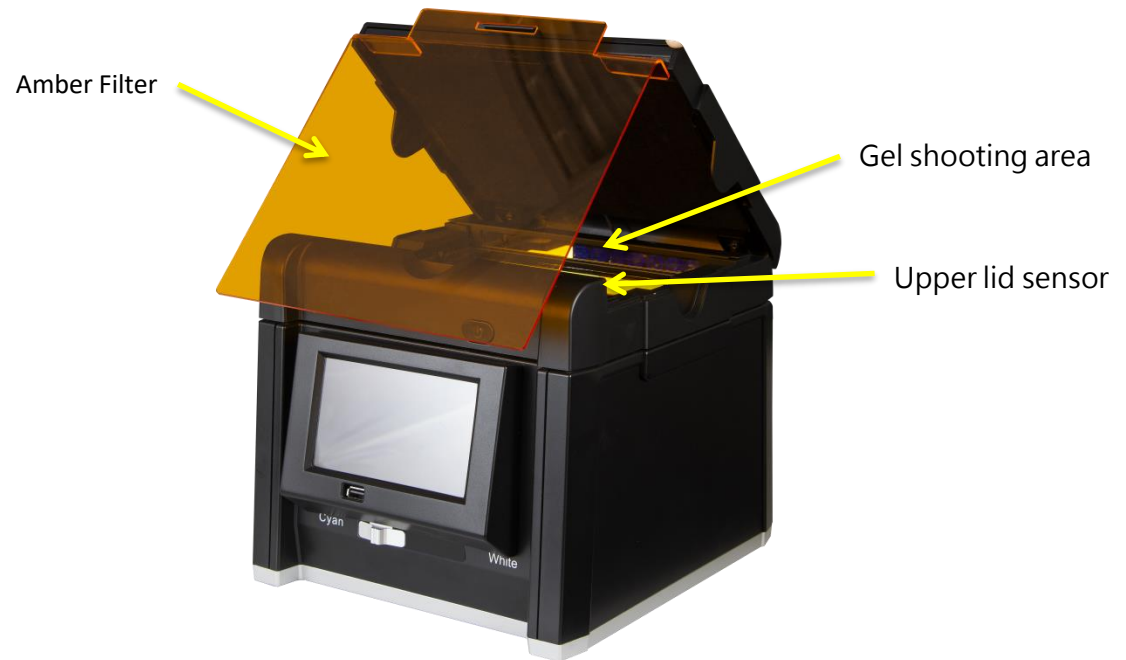
Front

- » Upper lid
- » USB 2.0
- » LCD Screen
- » Power switch
- » Light source switch



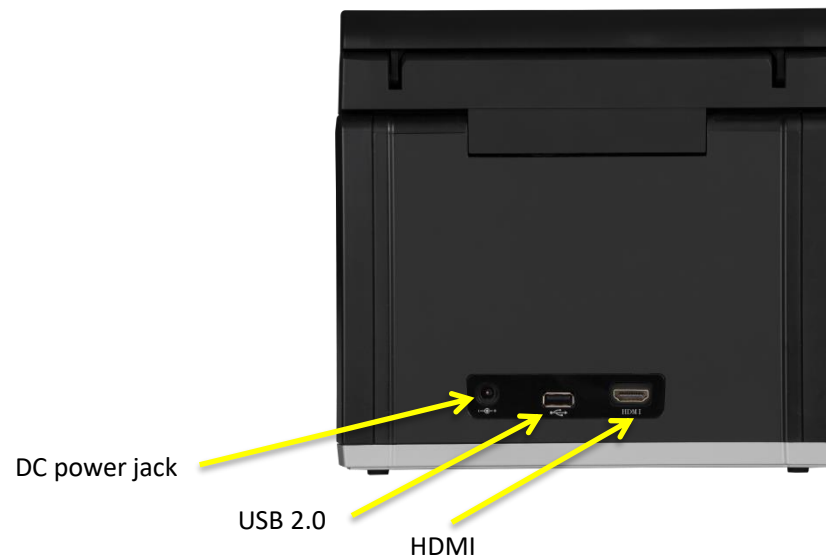
Interior

- » Gel shooting area
- » Upper lid sensor



Back

- » DC power jack
- » USB 2.0
- » HDMI

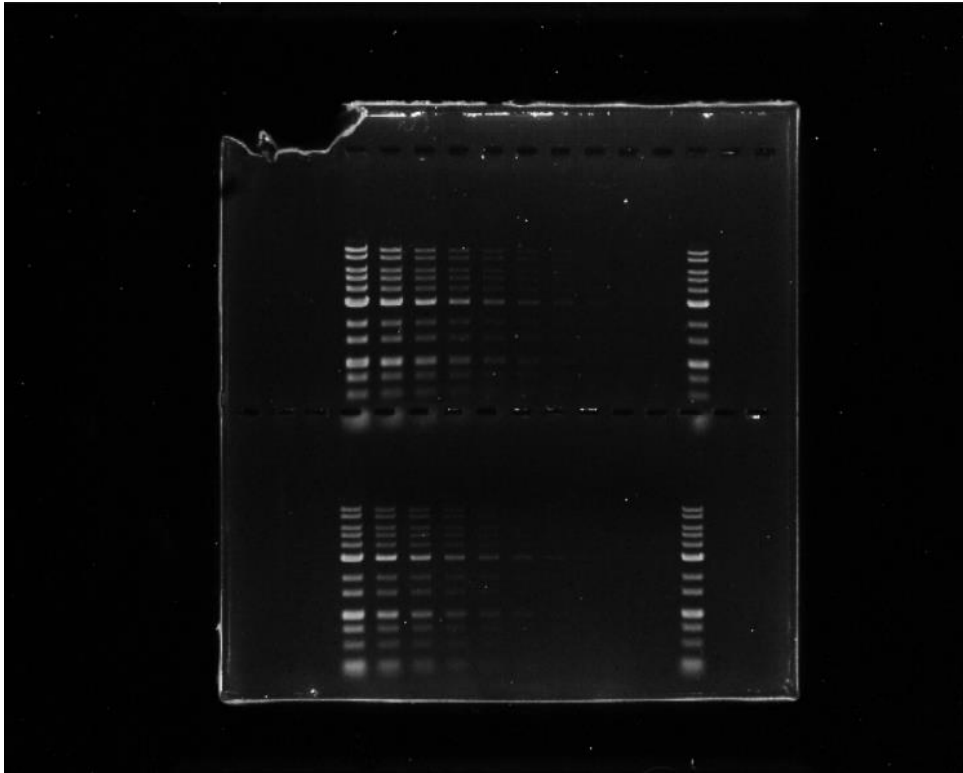


Install & use

1. Remove all fixing tape.
2. Place the Glite T8 on a flat table.
3. Connect the power supply.
4. Press the power switch.
5. Insert the USB flash drive into the USB2.0 port on the front.
6. Put the gel into gel shooting area.
7. Adjust the image exposure value to a satisfactory condition and press the button to take a photo.
8. Press "Save" to save the photo & result to USB

Interface description

Main screen



Capture

① Capture

Exposure

V 0 ^

② Exposure

B/G WL epi WL back

③ B/G & WL epi, WL back

Continuous Capture

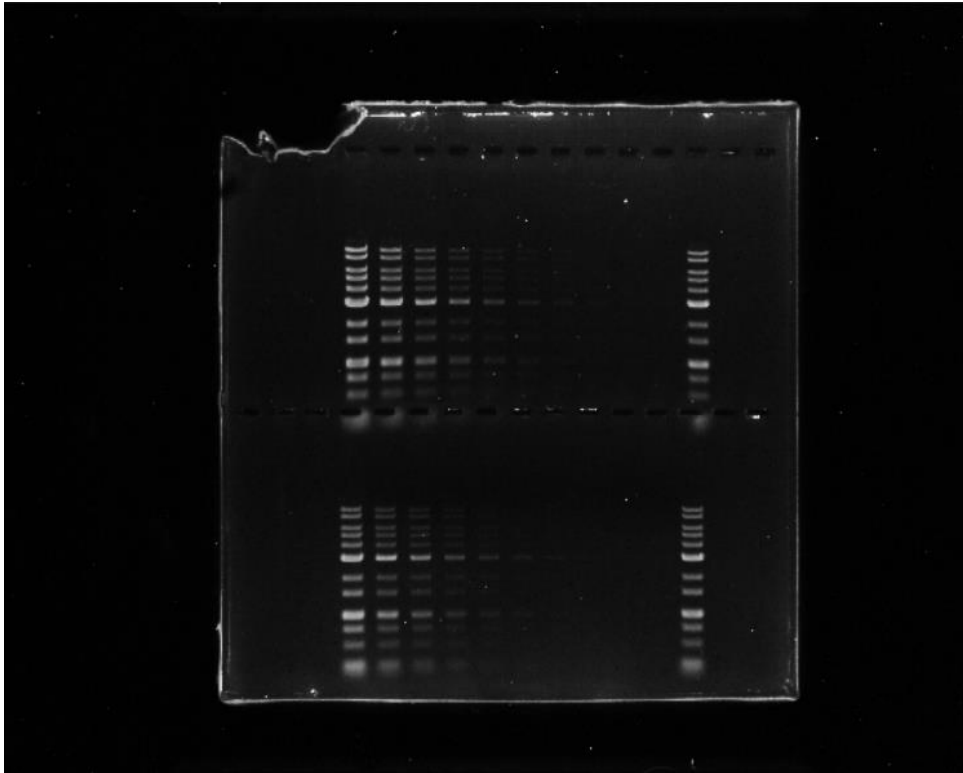
④ Continuous Capture

Setting Image Viewer

⑤ Setting

⑥ Image Viewer

① Capture



①

Capture

Exposure

V 0 ^

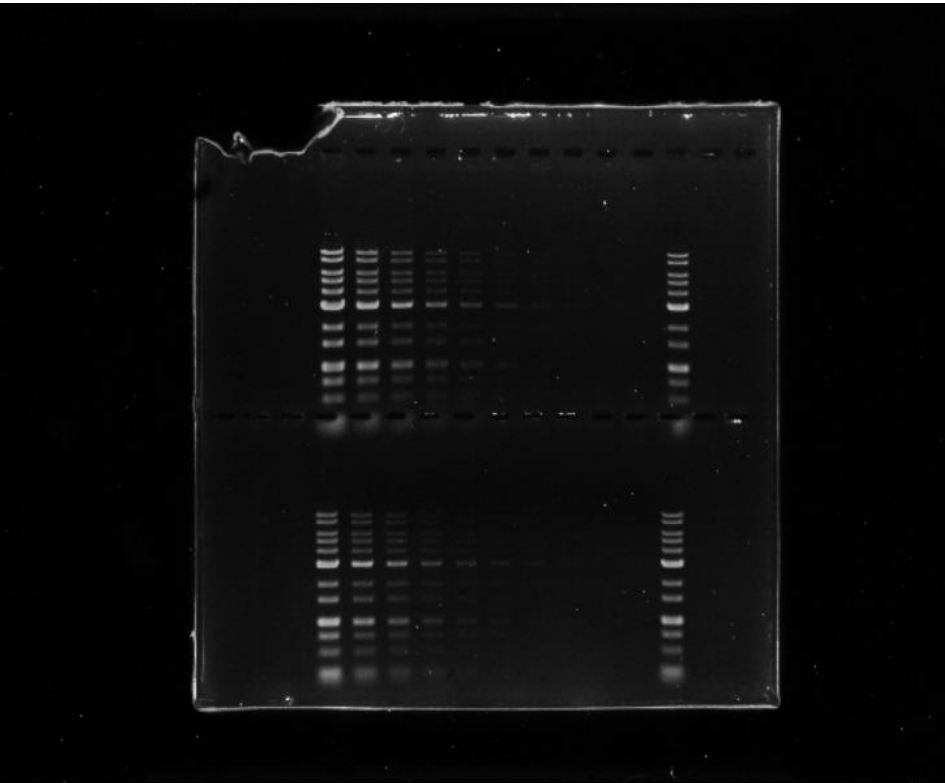
B/G WL WL
epi back

Continuous
Capture

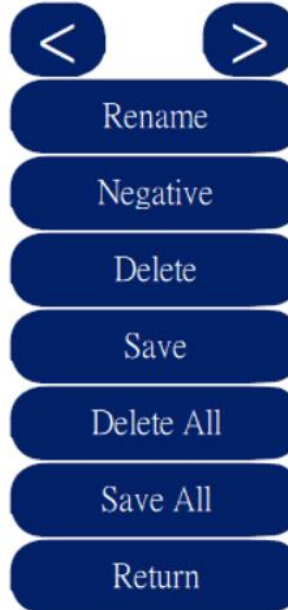
Setting Image
Viewer

① Capture is the button that allows you to take photos and capture the gel imaging screen.

① Capture



20210311001
EV: 0
2021/03/11
16:58:23



Click Capture, and after loading ends, you will be redirected to the setting screen after shooting.

Rename – Can be renamed

Negative – Can be adjusted to invert effect

Delete – Delete this result

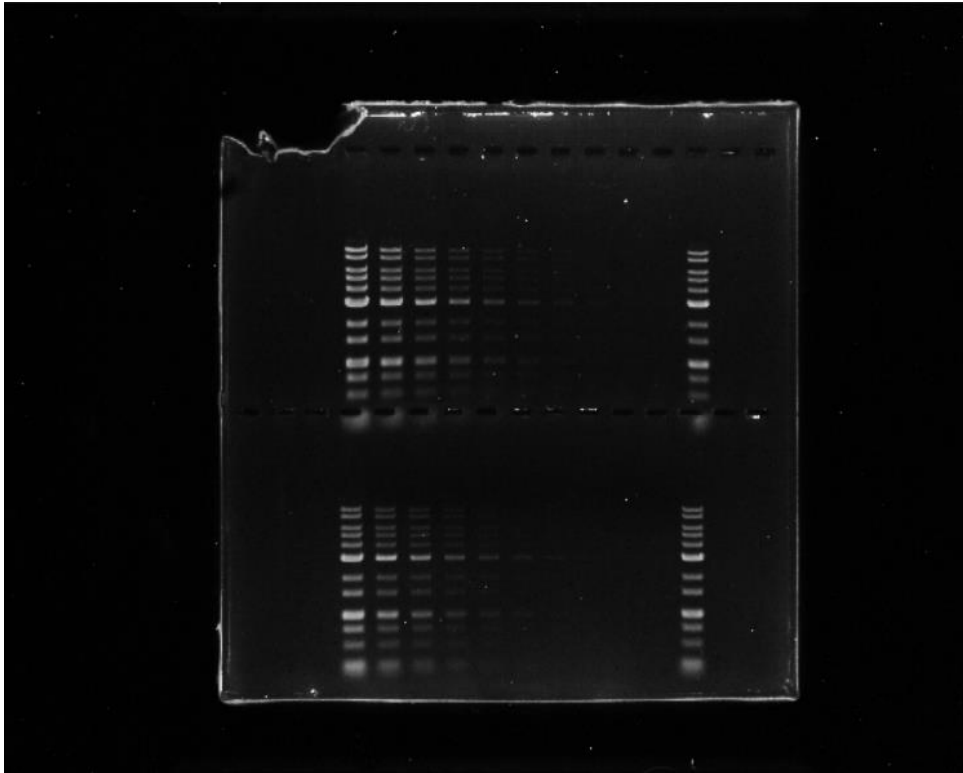
Save – Save this result

Delete all – Delete all results

Save all – Save all results

Return – Back to the main screen

② Exposure



Capture

② Exposure

V 0 ^

B/G WL WL
epi back

Continuous
Capture

Setting

Image
Viewer

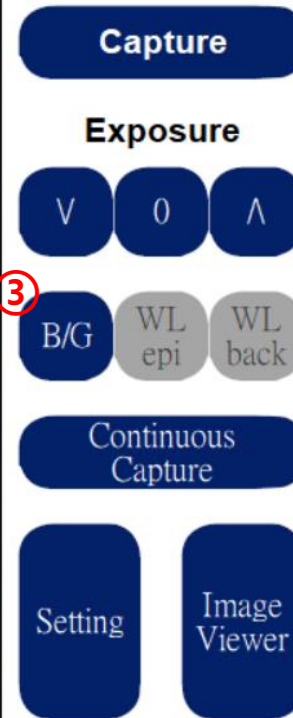
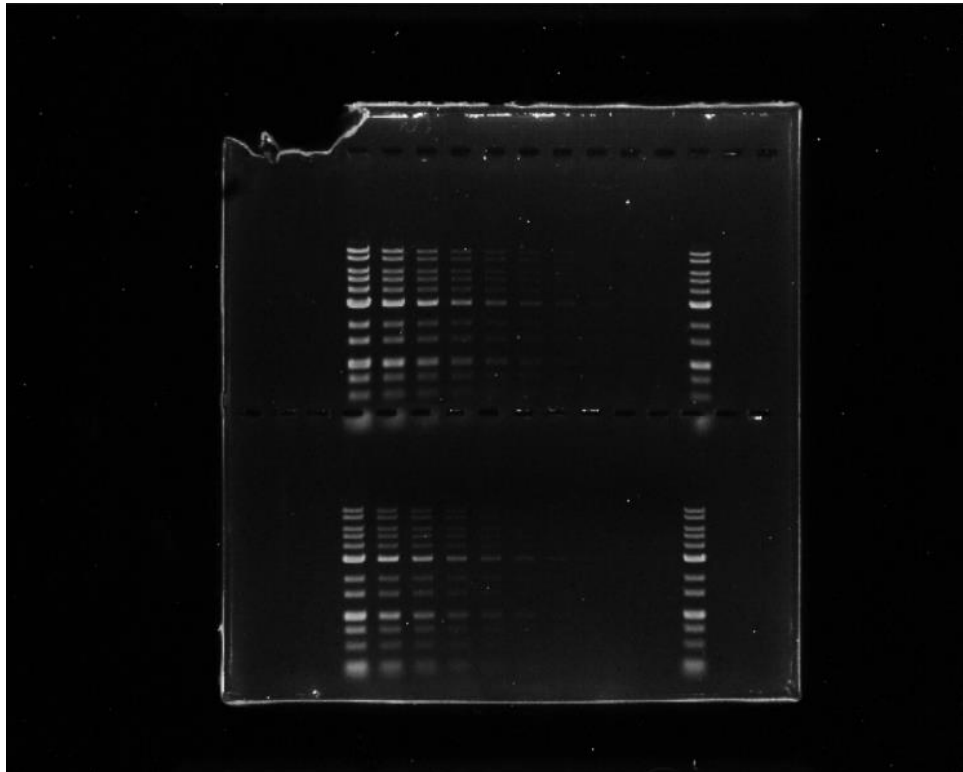
② Exposure allows users to adjust the exposure level.

Range: -10 to +10

③ B/G & WL epi, WL back

③ B/G is to adjusted to Cyan's light source using the switch on the front of the device.

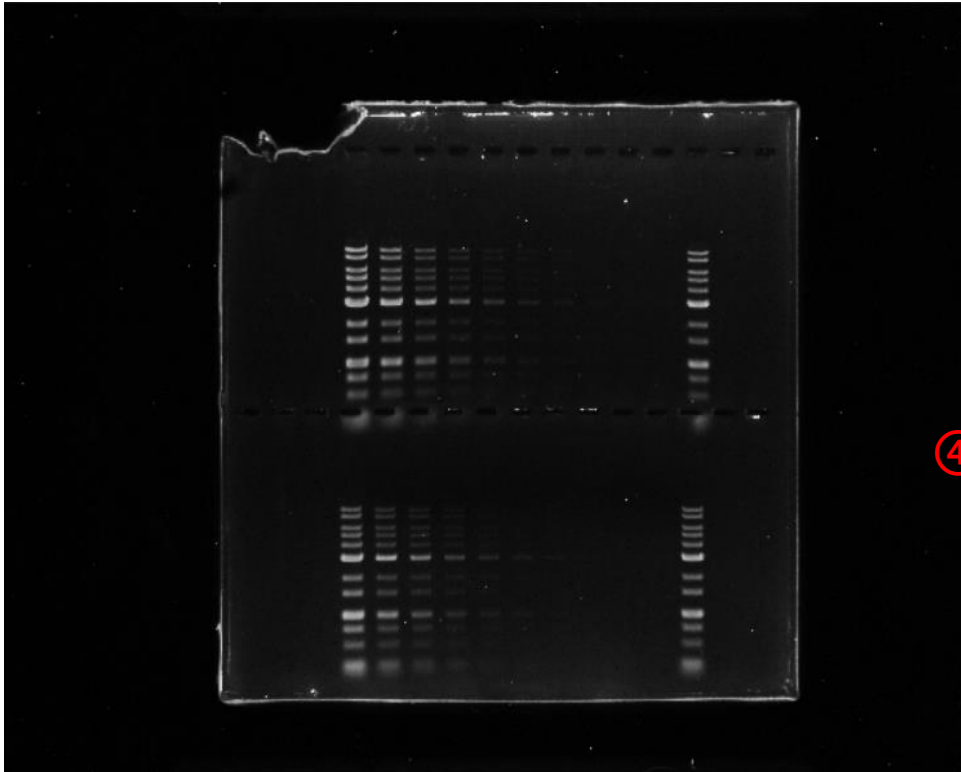
WL epi, WL back is to adjusted to White by the switch on the front of the device, and it has two modes: front light and backlight



← ✖ Notice: Click once to initiate the light source, and the background of the button would be white.



④ Continuous Capture



Capture

Exposure

V

0

^

B/G

WL

epi

WL

back

④

Continuous Capture

Setting

Image Viewer

④ Continuous Capture is the exposure value that can continuously shoot screens from -10 to +10.

After clicking, the following screen will appear

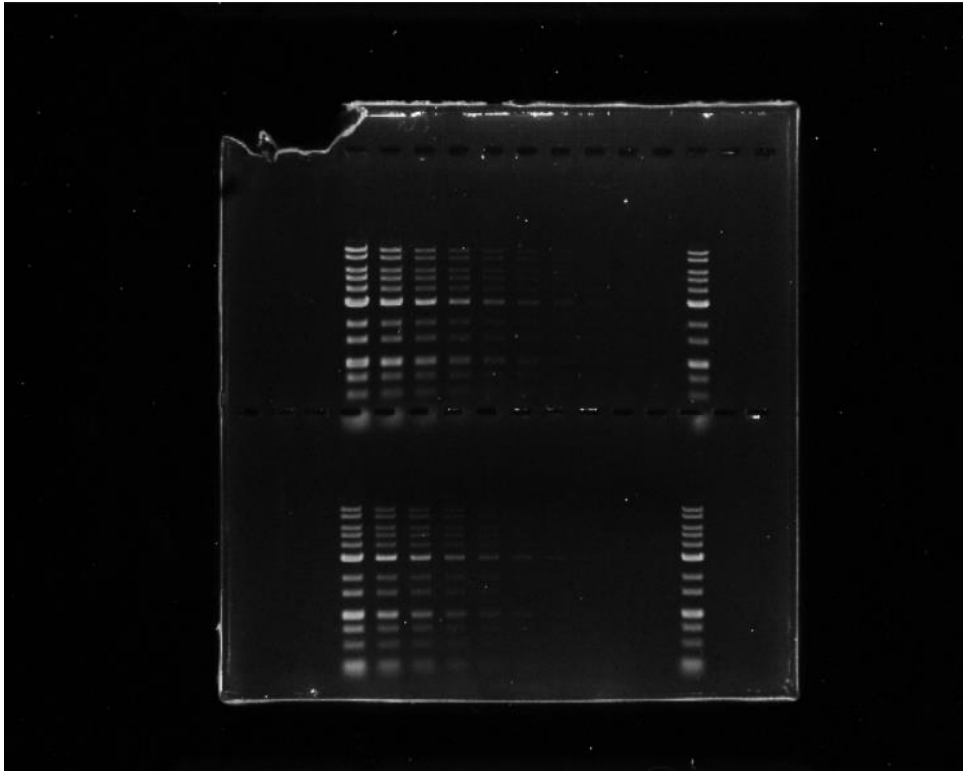


Capture EV:-10~EV:+10
Are you sure?

Yes

No

⑤ Setting



Capture

Exposure

V

0

^

B/G

WL
epi

WL
back

Continuous
Capture

⑤

Setting

Image
Viewer

⑤ Setting contains a variety of different settings (see next page)

⑤ Setting

Glite 8M UI-SW:v1.0.0.22a IO-FW:v0.0

- Update S/W
- Sleep
- Date Time
- Mouse

- Save Format : TIF
- Color Type : Color
- Language : English

Update S/W – Plug in the USB to update the software
Sleep – Sleep time can be set (as shown below)

- Sleep after
- 1 Min.
 - 5 Min.
 - 10 Min.
 - 30 Min.
 - Never

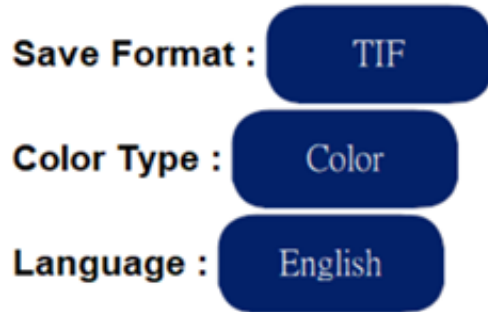
Back

⑤ Setting

Glite 8M UI-SW:v1.0.0.22a IO-FW:v0.0



Date/Time – Set the date and time (as shown below)



Date :

Year :

Month :

Day :

Time :

Hour :

Minute :

Second :

Mouse – You can connect a mouse to the USB port for operation

⑤ Setting

Glite 8M UI-SW:v1.0.0.22a IO-FW:v0.0

Update S/W

Sleep

Date
Time

Mouse

Save Format – Optional storage
image format (as shown below)

Save Format :

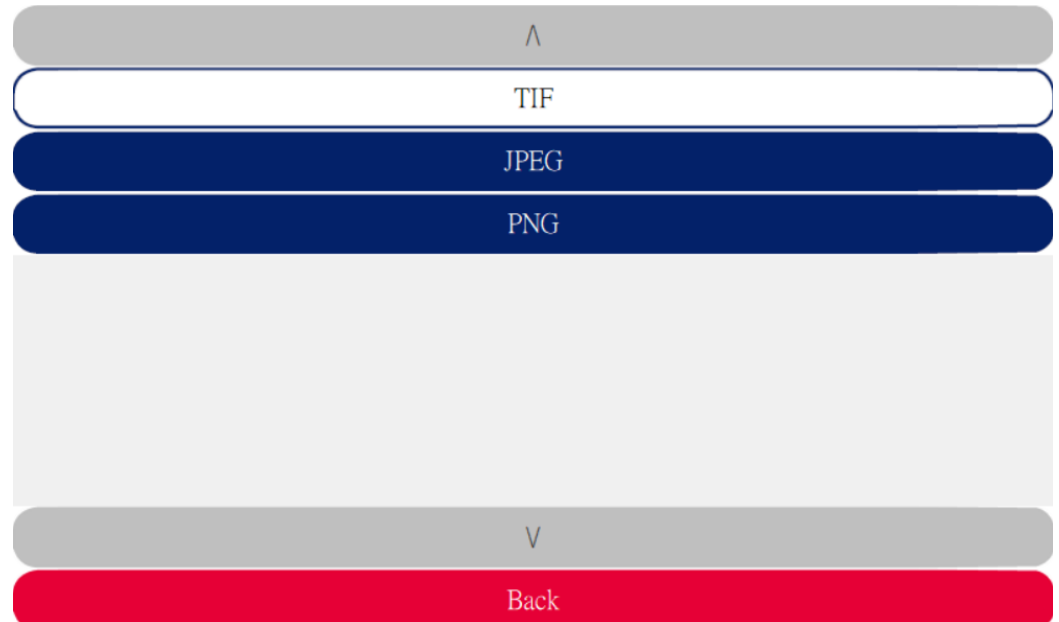
TIF

Color Type :

Color

Language :

English



⑤ Setting

Glite 8M UI-SW:v1.0.0.22a IO-FW:v0.0

Update S/W

Sleep

Date
Time

Mouse

Color Type – Choose Color or Gray
(as shown below)

Save Format :

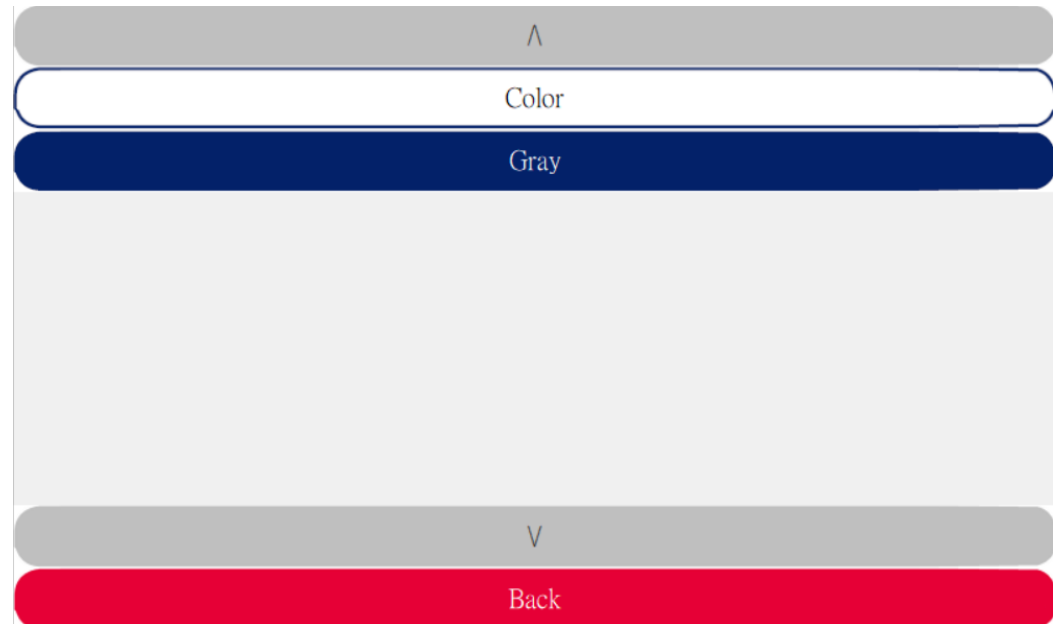
TIF

Color Type :

Color

Language :

English



⑤ Setting

Glite 8M UI-SW:v1.0.0.22a IO-FW:v0.0

Update S/W

Sleep

Date
Time

Mouse

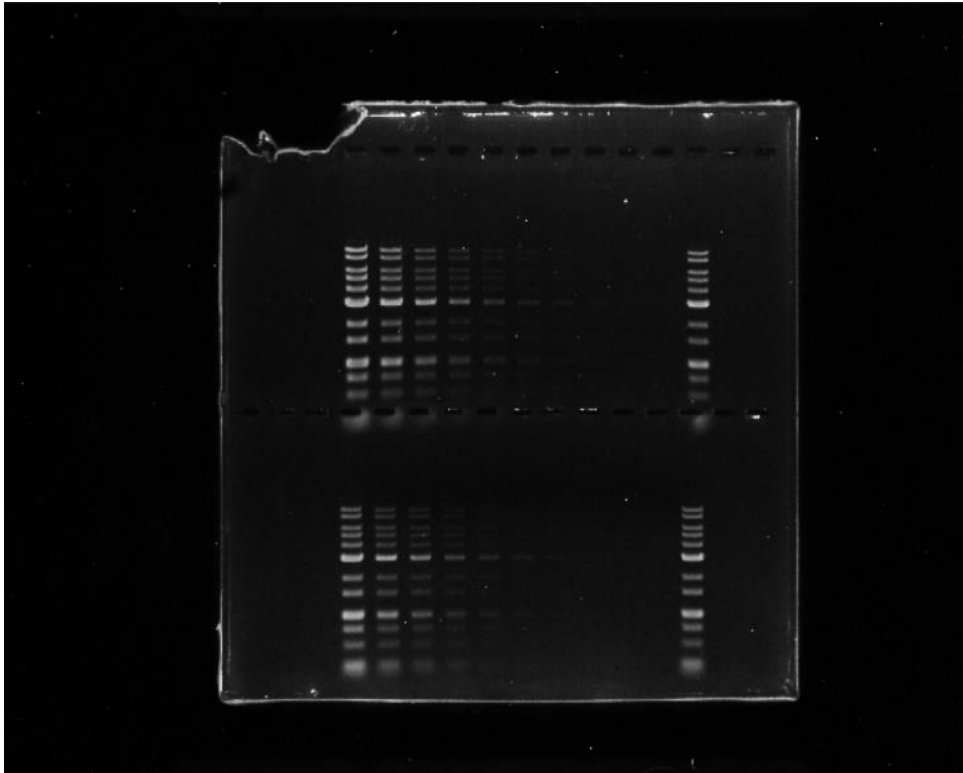
Language – English or Chinese

Save Format : TIF

Color Type : Color

Language : English

⑥ Image Viewer



Capture

Exposure

V 0 ^

B/G WL WL
epi back

Continuous
Capture

Setting

⑥
Image
Viewer

⑥ Image Viewer allows you to browse the previously analyzed images, please refer to the explanation on p8 for the screen.

Cyan Dye Gel

1. Lift up the upper lid.
2. Slide the black shading plate (with the flannel side outward) into the rail to cover the white backlight plate of the upper cover.
3. Close the upper lid (if you need to open the cover to cut gel, observe or adjust the position, please use the amber filter, as shown in the right picture, see p23).
4. Switch the light source to Cyan.
5. Press the Capture button and the Loading icon will appear on the LCD panel.

The gel shooting process is complete.



To shoot fluorescent film images, please slide the black shading plate (with the flannel side outwards) into the rail to cover the white backlight plate of the upper cover to avoid reflections.

Use a white light source to shoot WESTERN BLOT/ and color gel film:

1. Shooting HRP/DAP WESTERN BLOT with WL epi
 1. Slide the black shading plate (with the flannel side outward) into the rail to cover the white backlight plate of the upper cover.
 2. Close the upper lid.
 3. Switch the light source to the White position.
 4. Set "WL epi" on the main screen.
 5. Press the Capture key.
2. Use WL back to shoot SDS-PAGE gel with coomassie blue dye
 1. Pull out the black shading plate, do not cover the white backlight plate of the upper lid.
 2. Close the upper lid.
 3. Switch the light source to the White position.
 4. Set "WL back" on the main screen.
 5. Press the Capture key.

Use amber filter

Glite T8 has an amber filter to facilitate the user to observe and cut blue or blue-green light excited gel

1. When you open the top lid, the blue or blue and green lights on both sides will automatically turn off
2. Push the upper lid to the highest
3. Hang the amber filter as shown on the right
4. After installing the amber filter, press the camera button to start the blue/cyan light for gel cutting.



Project the screen to an external screen or projector

The operation screen of the machine can be projected to an external screen or projector through HDMI.

1. Set the TV or screen or projector to HDMI mode
2. Connect the HDMI cable to the video port of the TV or screen or projector
3. Connect the other end of the HDMI cable to the HDMI port on the back of the Glite T8
4. The operation screen of Glite T8 will be projected to the connected TV or screen or projector.



Product Specification

I. Instrument	
Image component	CMOS
Image resolution	9M Pixels
Exposure time range	0.2~ 2 sec (11 levels)
Image storage	USB
Gel shooting area	16 x 10.5cm (Fixed lens)

II. Lens and filter	
Filter Turret	Manual-Driven, 2 position
Emission Filter	518nm Amber Filter

III. Light	
Cyan light (GW)	510 nm LED
Epi white light	White light LED
White light backlight	White light LED backlight

VI. Interface	
Screen	2.7" Touch TFT LCD
Internal storage	SD Card
Output	1. USB 2.0 x2 2. VGA out (800x600, 1024x768)

V. Other information	
Power	AC Adaptor, 12V/4.6A
Size(WxHxD)	20.7x22.9x25.4cm (8.14 x 9.02 x 10 inch)
Gel cutting tool	Gel cutter, gel shovel, amber filter
Weight	3.2Kg (7.05 lb)
Safety certification	CE, FCC

Contact Information

For more information or any question, please contact :

**PACIFIC IMAGE ELECTRONICS CO., LTD
7F, No. 239, SEC. 1, DATONG RD., XIZHI DIST.,
NEW TAIPEI CITY 221,
TAIWAN**

**TEL: +886 2 8692 1800
FAX: +886 2 8692 1860
sales@scanace.com.tw
www.scanace.com**